



**Document: 58912.3**  
 Collection: 117: Advice Sheets  
 Modified: 28/11/2016 16:03  
 Created: 28/11/2016 15:59

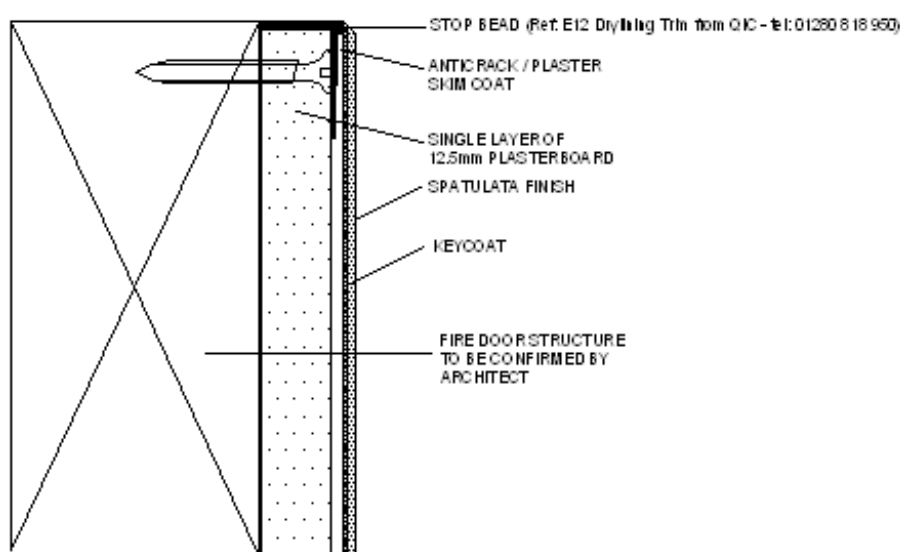
**Armourcoat Ltd**  
 Morewood Close Sevenoaks Kent TN13 2HU  
 T: +44(0)1732 460 668 F: +44(0)1732 450 930  
 UK Company 1997888. VAT Reg: 445788013  
 www.armourcoat.com

## Advice Sheet 5 Application to Door Faces

### Option 1 (onsite)

Single layer of 12.5mm plasterboard to be adhered and screwed through face of door at 300mm fixing centre intervals. Thin coat plastering reveal trims to be fitted by others to offer a) protection to the exposed edge; and b) offer a definite point for Armourcoat to rule off the finish. Armourcoat to apply a 3mm layer of Anti-crack to the surface of the plasterboard up to trim level. Armourcoat to apply polished plaster to the Anti-crack and up to the perimeter of the door. All edges to be chamfered back to give a crisp professional look. Armourcoat do not guarantee use of polished plaster on door faces.

Cross Section through edge of door – **NOT TO SCALE**



### Option 2 (offsite)

Armourcoat to pre-finish a single sheet of 18mm thick MDF on the front face only (one piece without joints). The MDF can then be provided directly to your joiner for precision cutting and fitting onsite. We are unable to finish the edge of the MDF. For this reason, it is best to postfix an L-shaped metal or wooden trim profile to offer protection and cover any unsightly edges. The MDF is to be prepared in accordance with document SSS7. If the MDF is being fixed directly to the door structure, all screw fixings shall be made on the reverse face of the door at 300mm fixing centres. Wherever possible, avoid face fixing. Countersinks shall be filled using a 2 pack polyester wood filler. If Armourcoat are required to apply polished plaster over the top of counter sunk screw heads, we cannot guarantee that the polished plaster will not "pop off" these areas. Armourcoat do not guarantee use of polished plaster on door faces.

Whilst every attempt has been made to ensure the accuracy and reliability of the information contained in this document, the information should not be relied upon as a substitute for formal advice. Armourcoat Ltd, its employees and agents will not be liable for any loss or damage, of any kind, arising out of or in connection with the use of this document. Please refer to the company disclaimer for further details.