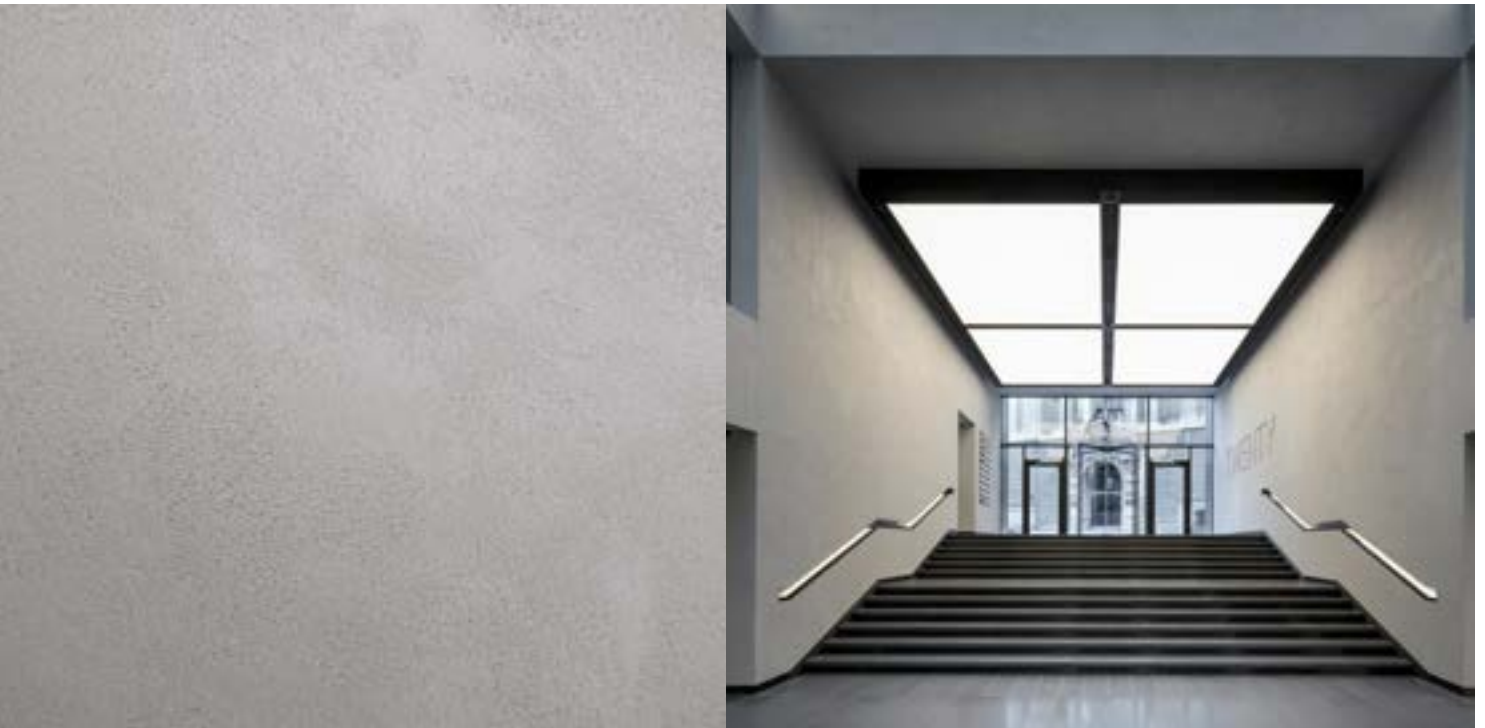


ARMOURCOAT®

SUSTAINABLE LUXURY FINISHES

SPECIFICATION SHEET

POLISHED PLASTER SELECTOR RANGE- KONCRETE (HONED)



A refined finish that embodies the aesthetic of contemporary concrete architecture.

Koncrete Honed is a natural lime and marble polished plaster with a refined, urban feel. The semi-polished finish reimagines the raw aesthetic of cast concrete and creates a more sophisticated, considered surface suitable for luxury interiors.



SUSTAINABLE
ACCREDITATIONS



ZERO VOC



FIRE
RATED





SPECIFICATIONS

POLISHED PLASTER SELECTOR RANGE- KONCRETE (HONED)

DESCRIPTION:	Armourcoat Koncrete (Honed) Polished Plaster Selector Range
MANUFACTURER:	Armourcoat Ltd
CONTACT DETAILS:	Address: Morewood Close, Sevenoaks, Kent, United Kingdom, TN13 2HU Telephone: +44 (0)1732 460668 Web: www.armourcoat.com Email: specsales@armourcoat.co.uk
COMPONENTS:	Natural lime and marble
REACTION TO FIRE:	EN 13501-1:2018: A2-s1,d0
FIRE RATING:	ASTM E84: Flame Spread index: 10, Smoke Development Index: 10, Classification: 1
VOC CONTENT AND EMISSIONS:	BREEAM International v2.0 (2016): Exemplary Level, French VOC Label: A+, Indoor Air Comfort: PASS, Indoor Air Comfort Gold: PASS, ABG/AgBB: PASS, Belgian Regulation: PASS, ASTM D2369: <1, SCAQMD Rule 1113: PASS, LEED v4 + v4.1 BETA: PASS
PREPARATORY REINFORCING SKIMCOAT:	Armourcoat Anticrack OR not required
LOCATION:	As drawing
HARDNESS:	Shore D Hardness test: 64, ASTM D3363 Pencil Harness: 5H+
RECYCLED CONTENT (MINIMUM):	29%
SYSTEM WEIGHT:	2.40-3.0 kg/m ²
EMBODIED CARBON:	EN15804 +A2: 0.34 Kg CO ₂ e
TECHNICAL CHARACTERISTICS, OTHER:	Mould and mildew resistance, to ASTM D3274: 10/10/10
COLOUR:	Insert colour selection
SEALER:	Aquawax as standard