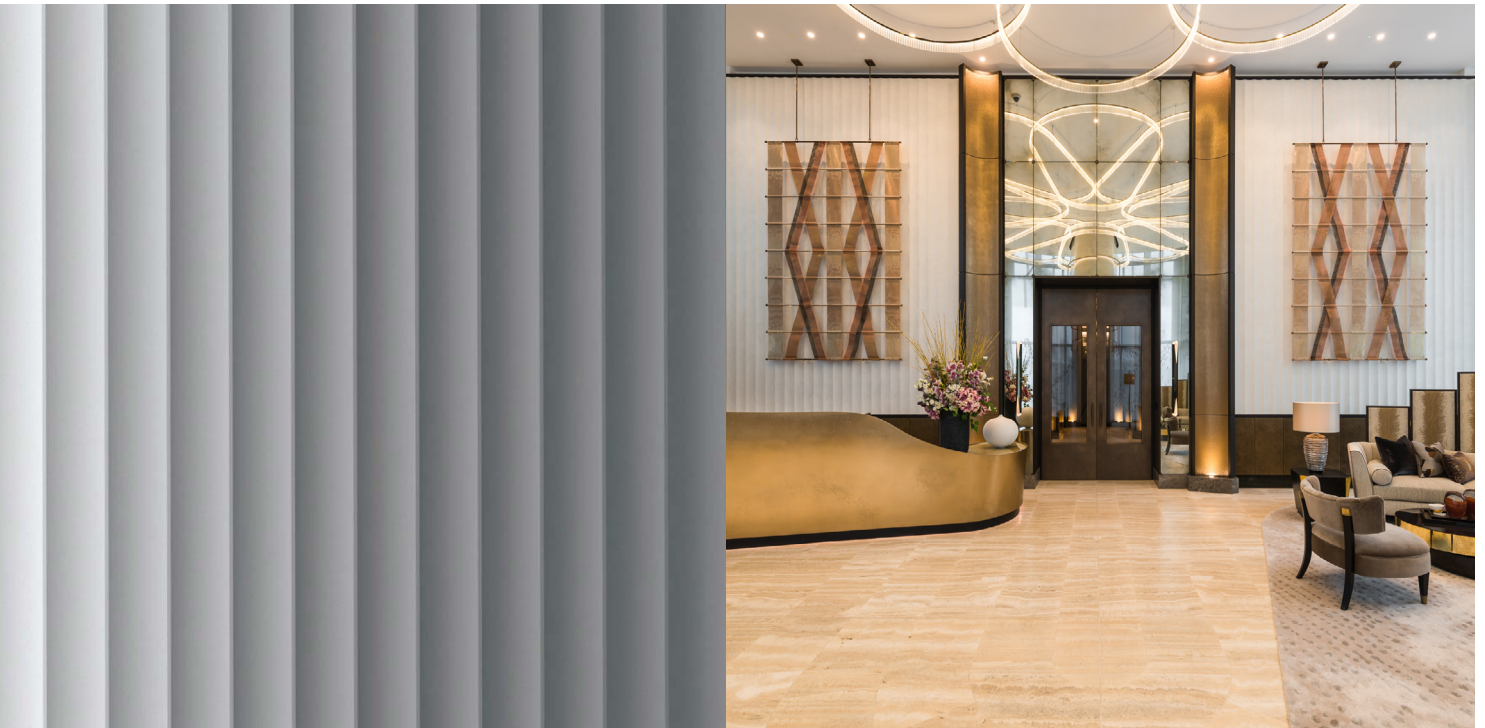


ARMOURCOAT®

SUSTAINABLE LUXURY FINISHES

SPECIFICATION SHEET

SCULPTURAL PLASTER - FLUTES



An elegant, linear three dimensional wall finish.

Flutes is a timeless, understated design that adds sophistication and interest to any interior. The linear scallops create subtle shading that is broken by confident, crisp ridge lines. The recommended finish for Flutes is Spatulata, a highly polished, superfine marble stucco polished plaster with amazing lustre.

Armourcoat Sculptural designs are handmade and seamlessly installed by skilled applicators before being decorated in the surface finish of your choice. Suitable for projects of all types, including swimming pools, sculptural designs are extremely durable and VOC free.



SEAMLESS
3D SURFACE



SUSTAINABLE
ACCREDITATIONS



FIRE RATED



SPECIFICATIONS

SCULPTURAL PLASTER - FLUTES

DESCRIPTION:	Armourcoat Sculptural Plaster - Flutes
MANUFACTURER:	Armourcoat Ltd
CONTACT DETAILS:	<p>Address: Morewood Close, Sevenoaks, Kent, United Kingdom, TN13 2HU</p> <p>Telephone: +44 (0)1732 460668</p> <p>Web: www.armourcoat.com</p> <p>Email: specsales@armourcoat.co.uk</p>
COMPONENTS:	Glass Reinforced Gypsum (GRG)
FIRE RATING:	EN 13501-1:2018: A1/A1 _{fl}
VOC CONTENT:	BREEAM International v2.0 (2016): Exemplary Level, BREEAM NOR v6 (2022): Exemplary Level, LEED v4 Beta (Feb 2021): Pass, French VOC Label: A+, French CMR Components: Pass, Italian CAM Edilizia: Pass, Indoor Air Comfort Gold: Pass, ABG/AgBB: Pass, Belgian Regulation: Pass
LOCATION:	As drawing
RECYCLED CONTENT (MINIMUM):	17%
DESIGN:	Flutes
FINISHES:	Matt emulsion paint OR Perlata
COLOUR:	Insert selection from finish colour palette
SEALER:	Defined by selected finish
SYSTEM WEIGHT:	17.0 kg/m ²
THICKNESS:	17mm
EMBODIED CARBON:	EN15804 +A2: 0.082 Kg CO ₂ e
TECHNICAL CHARACTERISTICS, OTHER:	Mould and mildew resistance, ASTM C109M: =>33Mpa, ASTM C-348: =>10Mpa