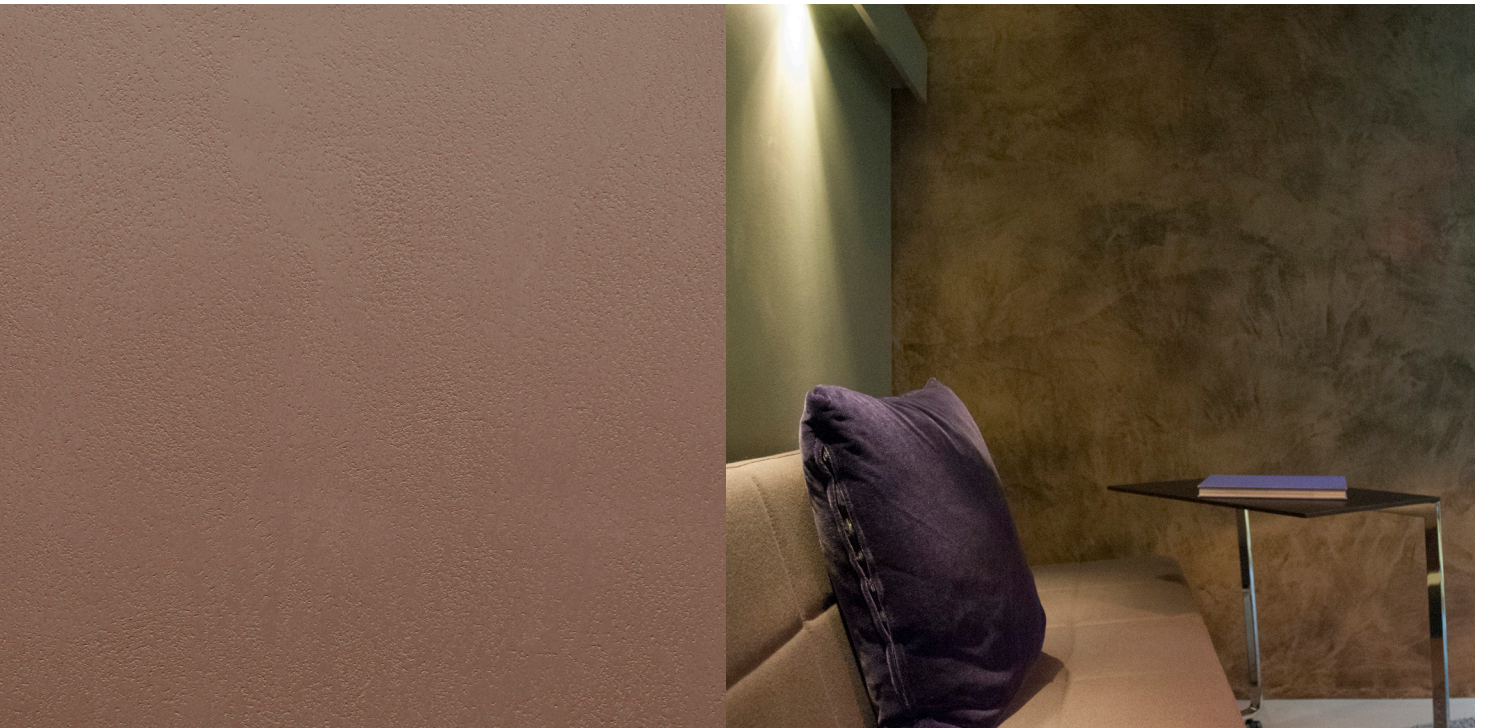


ARMOURCOAT®

SUSTAINABLE LUXURY FINISHES

SPECIFICATION SHEET

POLISHED PLASTER SELECTOR RANGE - LEATHERSTONE (INTERNAL)



A modern re-imagination of a classic surface finish for internal and external use.

Leatherstone is a natural lime and marble polished plaster that combines the look of lightly polished stone with the surface interest of aged leather. It has an open, non-directional texture with distinctive surface movement that can be further enhanced with use of a tinted, metallic or pearlescent sealer.



SUSTAINABLE
ACCREDITATIONS



ZERO VOC



FIRE
RATED



SPECIFICATIONS

POLISHED PLASTER SELECTOR RANGE - LEATHERSTONE (INTERNAL)

DESCRIPTION:	Armourcoat Leatherstone (Internal) Polished Plaster Selector Range
MANUFACTURER:	Armourcoat Ltd
CONTACT DETAILS:	<p>Address: Morewood Close, Sevenoaks, Kent, United Kingdom, TN13 2HU</p> <p>Telephone: +44 (0)1732 460668</p> <p>Web: www.armourcoat.com</p> <p>Email: specsales@armourcoat.co.uk</p>
COMPONENTS:	Natural lime and marble
REACTION TO FIRE:	EN 13501-1:2018: A2-s1,d0
FIRE RATING:	ASTM E84: Flame Spread index: 10, Smoke Development Index: 10, Classification: 1
VOC CONTENT AND EMISSIONS:	BREEAM International v2.0 (2016): Exemplary Level, French VOC Label: A+, Indoor Air Comfort: Pass, ABG/AgBB: Pass, Belgian Regulation: Pass, ASTM D2369: <1, SCAQMD Rule 1113: Pass, LEED v4 + v4.1 BETA: Pass
PREPARATORY REINFORCING SKIMCOAT:	Armourcoat Anticrack OR not required
LOCATION:	As drawing
HARDNESS:	Shore D Hardness test: 64, ASTM D3363 Pencil Harness: 5H+
RECYCLED CONTENT (MINIMUM):	44%
SYSTEM WEIGHT:	3.30-3.90 kg/m ²
EMBODIED CARBON:	EN15804 +A2: 0.34 Kg CO ₂ e
TECHNICAL CHARACTERISTICS, OTHER:	Mould and mildew resistance, to ASTM D3274: 10/10/10
COLOUR:	Insert colour selection
SEALER:	Aquawax as standard